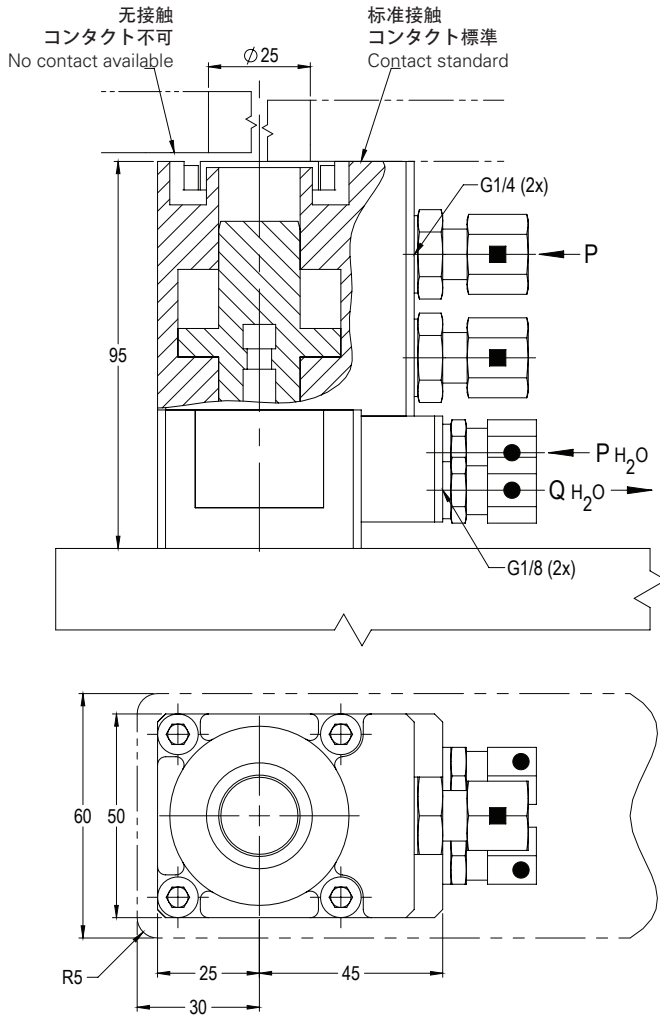
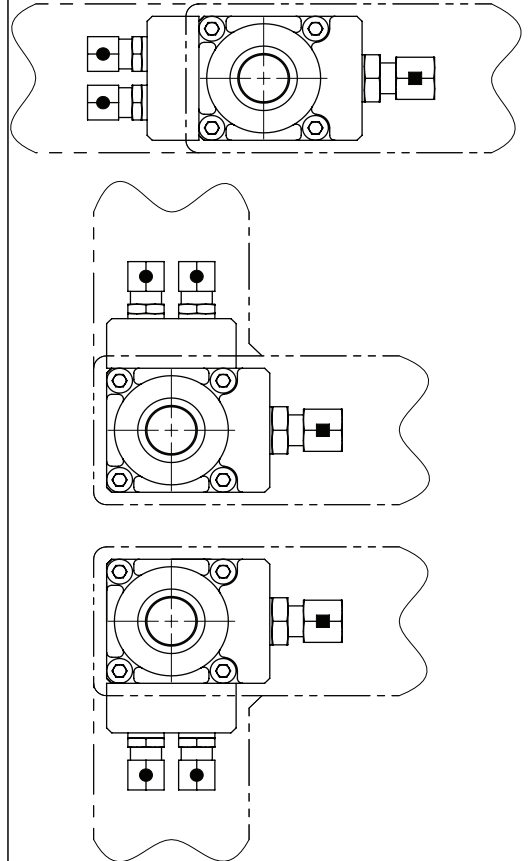


DV18/22/25 HEM

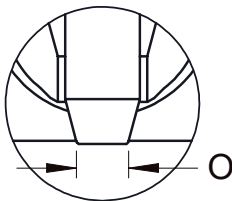


连接类型 / 継手方式 / Connecting Version



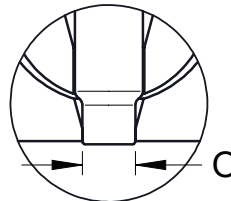
DV18/22/25 HEM

O (mm)	PMax (bar)
6,5	55 bar
6,0	55 bar
5,5	55 bar
5,0	55 bar
4,5	50 bar
4,0	30 bar
3,5	40 bar
3,0	35 bar



DV18/22 HEM

O (mm)	PMax (bar)
6,0	55 bar
5,5	55 bar
5,0	55 bar
4,5	55 bar
4,0	40 bar
3,5	40 bar
3,0	40 bar



● = 水 / 水 / Water

● Pmax=10bar

● Temp. 10° - 50° C

● Q<sub>min</sub>=V=6 L/min.

● 一条冷却回路最多连接四个油缸・1つの冷却回路で最大4つのシリンダまで接続可能・A maximum of 4 cylinders may be connected to a cooling circuit

■ = 油 / 油 / Oil

■ Q<sub>min</sub>=V=8 L/min.