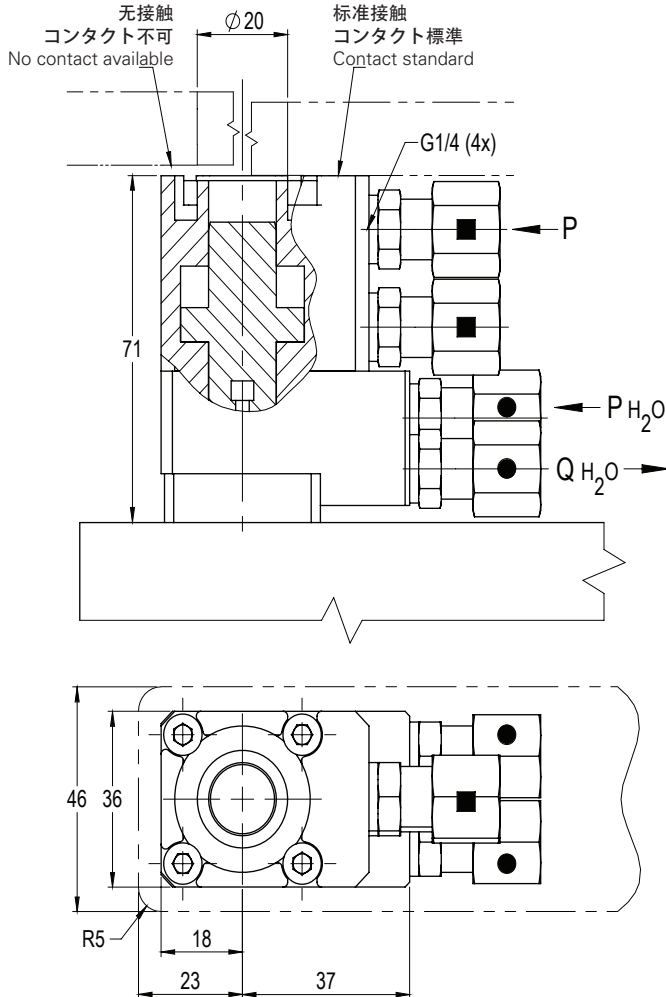
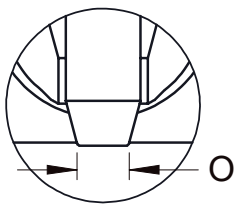
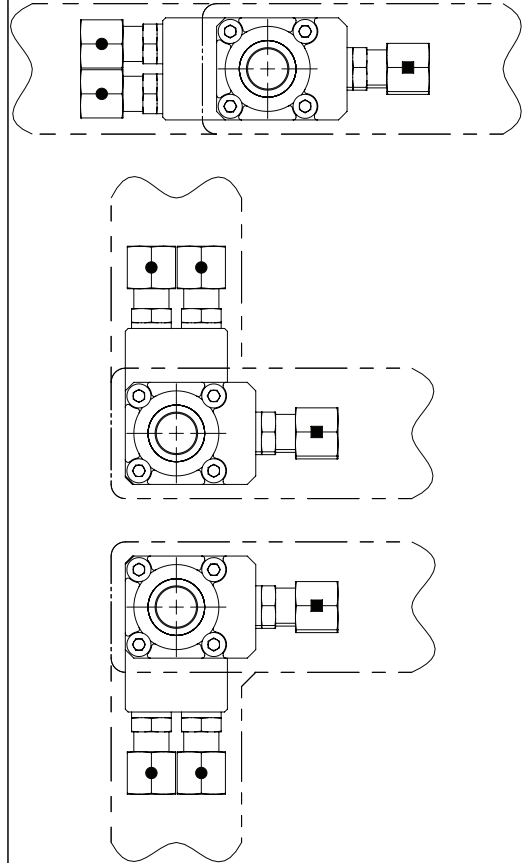


DV5/8/12 HEM



连接类型 / 継手方式 / Connecting Version



DV5 HEM

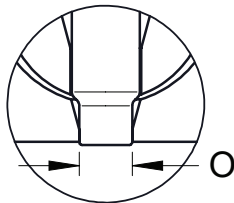
O (mm)	PMax (bar)
1,5	15 bar

DV8 HEM

O (mm)	PMax (bar)
2,0	25 bar
1,5	20 bar

DV12 HEM

O (mm)	PMax (bar)
3,5	60 bar
3,0	50 bar
2,5	40 bar
2,0	30 bar



DV5 HEM

O (mm)	PMax (bar)
1,5	25 bar
1,2	20 bar
1,0*	20 bar

DV8 HEM

O (mm)	PMax (bar)
2,0	25 bar
1,5	25 bar
1,2	20 bar
1,0*	20 bar

DV12 HEM

O (mm)	PMax (bar)
3,5	60 bar
3,0	60 bar
2,5	60 bar
2,0	60 bar

\*最終的选择需与INCOE的应用工程部进行确认。

\*最終選定はINCOE技術部門にて確認

\*A review with INCOE's Application Engineering Dept. is required for final selection.

● = 水 / 水 / Water

■ = 油 / 油 / Oil

- Pmax=10bar
- Temp. 10° - 50° C
- Q<sub>min</sub>=V=4 L/min.
- 一条冷却回路最多连接四个油缸 • 1つの冷却回路で最大4つのシリンダまで接続可能 • A maximum of 4 cylinders may be connected to a cooling circuit

■ Q<sub>min</sub>=V=2 L/min.