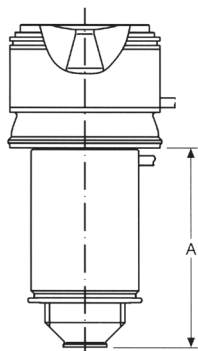
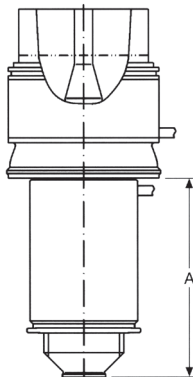


DFX-R



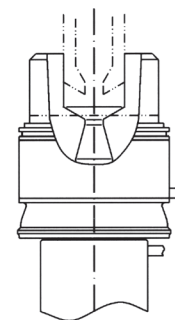
Single Nozzles with Radius Head  
 Boquillas únicas con Cabeza de Radio  
 Buchas Quentes com raio / angulo na cabeça

DFX-E



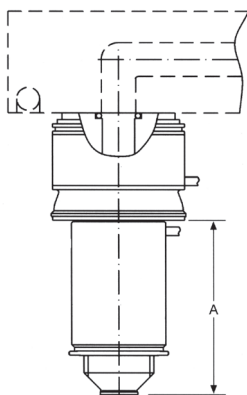
Single Nozzles with Extra Stock Head  
 Boquillas únicas con Cabeza que tiene Material Adicional  
 Buchas quentes com sobremetal na cabeça

DFX-ED



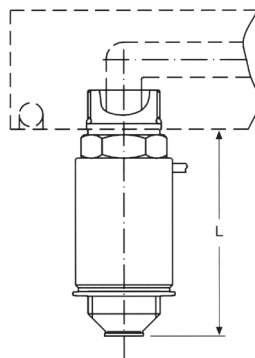
Decompression  
 Descompresión  
 Descompressão

DFX-M



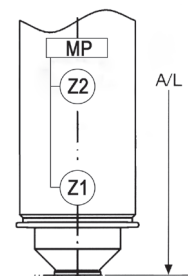
Compression Style Nozzles with Steel O-Ring  
 Boquillas estilo compresión con O - Ring de Acero  
 Buchas para vedação com compressão com o'ring de aço

DFQ



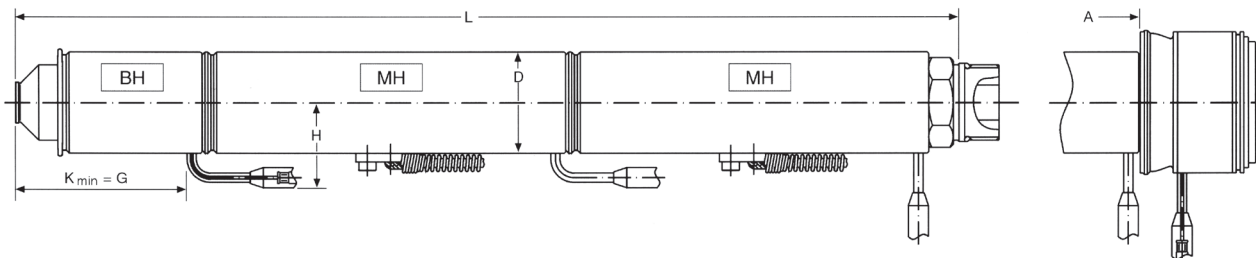
Thread Style Nozzles  
 Boquillas estilo Rosca  
 Bucha Quente roscada

DF-T Thermal Tip



Multi-Power (MP) for all Nozzles from DF 8 - DF 22  
 Resistencia base para todos los Inyectores desde  
 DF 8 - DF 22 en adelante  
 Resistências para todas as buchas quentes  
 a partir da série DF8 - DF22

Multi Zone Nozzles • Boquillas para Zonas Múltiples • Buchas Quentes Multi-Zona



Long Nozzles with Multi Heating Zones from DF 12 and Up  
 Boquillas largas con zonas de calentamiento múltiple, desde DF  
 12 en adelante  
 Buchas Quentes com aquecimento Multi-Zona a partir de DF 12

BH = Base Heater  
 BH = Calentador Base  
 BH = Resistência da Base

MH = Multi Zone Heater  
 MH = Calentador para Zonas Múltiples  
 MH = Resistência Multi-Zona

Slim Front Nozzles • Boquillas de Frente Delgado • Buchas Quentes com Frente Reduzida

