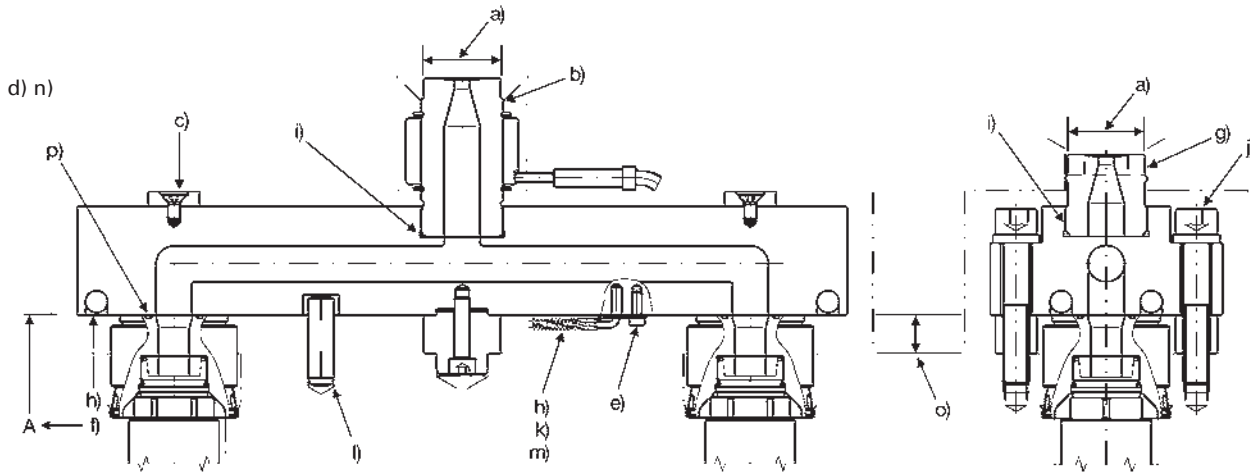


1.12 DFX MANIFOLD: ASSEMBLY



NOTES

- a) Must locate and seal.
- b) Contact max. 0.6 mm.
- c) Clearance for expansion to system drawing.
- d) Use anti-size for all threads.
- e) Tighten.
- f) Mold dimension must include expansion.
- g) For PP, PE, PS only.
- h) Protect all wires from heat.
- i) Consult INCOE® before removing.
- j) Torque Forces
M6=14 Nm, M8=35 Nm,
M10=70 Nm, M12=120 Nm
- k) Fe-CuNi white = + / red = -
- l) Offset dowel.
- m) Extend TC only with Fe-CuNi wire.
- n) Before assembly check all zones individually at approx. 100°C (212°F).
- o) Supports with nozzles.
- p) Prevent damage to O-Rings and seal areas.

PLEASE NOTE!

The system drawing is binding for assembly. Should you have any questions please contact our Applications or Design Department.